

**BLUE EPOXY COATED
LM6 ALUMINIUM FITTINGS
FOR PVC PIPE (9 BAR)**



**BLACK BITUMEN COATED
CAST IRON FITTINGS FOR PVC PIPE
(16 BAR)**

CODE 60 – FEMALE ADAPTORS BSP



CODE A60 – FEMALE ADAPTORS BSP



Available Sizes
75 x 3"
90 x 3"
110mm x 4"

SIZE	50mm	63mm	75mm	90mm	110mm	125mm	140mm
TO	50mm	50mm	50mm				
OR			80mm	80mm	80mm	80mm	80mm
OR					100mm	100mm	100mm
PRICE	R344.58	R418.30	R555.75	R623.46	R858.41	R1 735.38	R1 931.79
PRICE			R724.23	R865.39	R1061.79		

CODE 61 - FLANGED ADAPTORS

CODE A61 - FLANGED ADAPTORS

Flange is always table "D"



IR Rings
on page 50

Cast Iron Only
75, 90, 110mm
is multi drilling.
Rest all TD



50mm	63mm	75mm	90mm	110mm	125mm	140mm	160mm	200mm	250mm	315mm
50mm	50mm	80mm	80mm	100mm	125mm	125mm	150mm	200mm	250mm	300mm
R573.95	R586.18	R659.65	R731.99	R941.10	R1 134.25	R1 278.19	R1 416.73	R2 715.30	R4 573.10	
R484.86	R589.20	R687.40	R834.70	R994.28	R1 344.12	R1 436.18	R1 798.30	R2 620.73	R4 523.36	R6 100.70

CODE 64 - 65 BENDS

CODE A62 – A65 BENDS

CODE 64 – 45°	CODE 65 – 90°

CODE A62 – 11.25° <small>(only 110mm/160mm)</small>	CODE A63 – 22.5° <small>(only 110mm/160mm)</small>
CODE A64 – 45° <small>(only 110mm/160mm)</small>	CODE A65 – 90° <small>(only 110mm/125mm/140mm/160mm)</small>

SIZE	50mm	63mm	75mm	90mm	110mm	125mm	140mm	160mm	200mm	250mm
PRICE	R736.28	R888.27	R1 099.10	R1 469.86	R1 818.52	R2 133.28	R2 456.42	R2 686.47	R4 293.07	R4 949.34
PRICE					R1 178.41	R1 651.00	R1 853.53	R2 203.37		

**BLUE EPOXY COATED
LM6 ALUMINIUM FITTINGS
FOR PVC PIPE (9 BAR)**



**BLACK BITUMEN COATED
CAST IRON FITTINGS FOR PVC PIPE
(16 BAR)**

CODE 66 – COUPLINGS

CODE A66 – COUPLINGS



Slip over type

SIZE	50mm	63mm	75mm	90mm	110mm	125mm	140mm	160mm	200mm	250mm
PRICE	R341.44	R433.56	R536.28	R592.40	R921.26	R1 045.90	R1 300.67	R1 538.78	R2 410.73	R4 875.67
PRICE	R417.35	R533.97	R656.72	R773.33	R975.87	R1 270.47	R1 344.12	R1 651.00	R2 307.71	R3 670.24

CODE 67 – END CAPS

CODE A67 – END CAPS



SIZE	50mm	63mm	75mm	90mm	110mm	125mm	140mm	160mm	200mm	250mm
PRICE	R255.75	R426.57	R513.76	R567.14	R976.23	R1 130.17	R1 283.14	R1 375.47	R1 633.04	R3 778.40
PRICE	R257.78	R288.46	R355.98	R472.59	R601.48	R773.33	R846.98	R1 024.97	R1 380.94	R2 270.89

CODE 69 – EQUAL TEES

CODE A69 – EQUAL TEES



SIZE	63mm	75mm	90mm	110mm	125mm	140mm	160mm	200mm	250mm	315mm
PRICE	R1 220.33	R1 502.87	R1 724.49	R2 726.20	R2 989.85	R4 574.49	R3 569.74	R6 890.90	R8 136.46	
PRICE	R705.82	R951.32	R1 184.54	R1 571.21	R1 914.91	R2 178.82	R2 866.23	R4 443.57	R8 027.89	R12 232.10

**BLUE EPOXY COATED
LM6 ALUMINIUM FITTINGS
FOR PVC PIPE (9 BAR)**



**BLACK BITUMEN COATED
CAST IRON FITTINGS FOR PVC PIPE
(16 BAR)**

CODE 72 – REDUCER

CODE A72 – REDUCER



***Non
stock
Items**

SIZE	63mm	75mm	90mm	110mm	125mm	140mm	160mm	200mm	250mm	315mm
x50mm	R503.10	R527.10								
x50mm	R592.22									
x63mm			R599.87							
x63mm		R546.24	R601.48							
x75mm			R628.72	R732.19						
x75mm			R730.37	R840.84						
x90mm				R656.40	R997.93					
x90mm				R853.12			R1 245.92			
x110mm					R1 062.68	R1 196.98	R1 151.05			
x110mm					R1 135.44	R1 190.68	R1 307.29			
x125mm						R1 212.70	R1 346.16			
x125mm						R1 264.33				
x140mm							R1 398.08			
x160mm								R1 744.70		
x160mm								R2 160.41		
x200mm									R4 863.96	
x200mm									R3 461.57	R5 467.93



**BLUE EPOXY COATED
LM6 ALUMINIUM FITTINGS
FOR PVC PIPE (9 BAR)**



**BLACK BITUMEN COATED
CAST IRON FITTINGS FOR PVC PIPE
(16 BAR)**

CODE 74 – REDUCING TEES

CODE A74 – REDUCING TEES



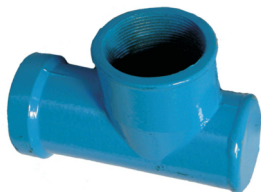
**Complete
Range
Non stock
Items**

Higher price
due to production
process

SIZE	63mm	75mm	90mm	110mm	125mm	140mm	160mm	200mm	250mm
x50mm	R1 208.11	R1 492.64							
x63mm		R1 504.86	R1 719.10						
x63mm		R853.12	R1 031.11	R1 368.67					
x75mm			R1 717.10	R2 699.36					
x75mm			R1 129.31	R1 454.59					
x90mm				R2 706.79	R2 954.71				
x90mm				R2 191.10			R2 356.81		
x110mm					R2 974.13	R4 508.48	R2 413.65	R3 900.06	
x110mm							R2 847.81		
x125mm						R4 524.19	R3 518.38	R3 915.78	
x140mm							R3 568.68	R3 966.10	
x160mm								R3 392.10	
x160mm								R3 584.32	R6 775.83

CODE 75 – R.O. BENDS

CODE A75 – R.O. BENDS



**Cast Iron Only
75, 90, 110mm
always 80mm outlet**

SIZE	50mm	63mm	75mm	90mm	110mm	125mm	140mm	160mm	200mm
TO	50mm	50mm	50mm	50mm	50mm	50mm			
OR			80mm	80mm	80mm	80mm	80mm	80mm	80mm
OR					100mm	100mm	100mm	100mm	100mm
PRICE	R681.87	R771.79	R1 037.94	R1 149.83	R 1838.84	R2 177.35	R2 132.30	R2 306.00	R2 985.80
TO	50mm	50mm	80mm	80mm	80mm				
PRICE	R441.90	R564.65	R718.09	R779.47	R951.32				

**BLUE EPOXY COATED
LM6 ALUMINIUM FITTINGS
FOR PVC PIPE (9 BAR)**

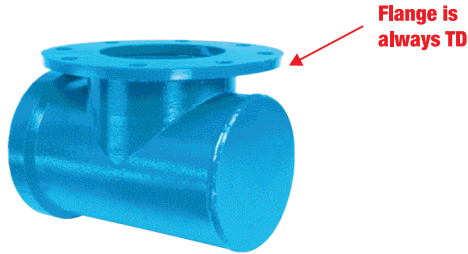


**BLACK BITUMEN COATED
CAST IRON FITTINGS FOR PVC PIPE
(16 BAR)**

CODE 75FL – R.O. BEND WITH FLANGE

**IR Rings
on page 50**

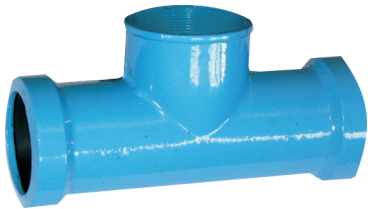
**Complete
Range
Non stock
Items**



SIZE	160mm	200mm	200mm	250mm
FLANGE	150mm	150mm	200mm	150mm
PRICE	R3 328.80	R3 954.71	R6 216.78	R7 007.37

CODE 76 – R.O. TEES F/F

CODE A76 – R.O. TEES F/F



SIZE	50mm	63mm	75mm	90mm	110mm	125mm	140mm	160mm	200mm	250mm
TO	50mm	50mm	50mm	50mm	50mm	50mm	50mm	50mm	50mm	50mm
OR			80mm	80mm	80mm	80mm	80mm	80mm	80mm	80mm
OR					100mm	100mm	100mm	100mm	100mm	100mm
PRICE	R544.00	R666.52	R979.34	R994.20	R1 511.62	R1 601.92	R2 096.40	R2 203.38	R2 739.49	R5 628.83
PRICE			R1 178.41	R1 319.57	R1 515.97	R1 994.70	R2 399.77	R2 731.20	R3 633.42	R6 972.23



**BLUE EPOXY COATED
LM6 ALUMINIUM FITTINGS
FOR PVC PIPE (9 BAR)**



**BLACK BITUMEN COATED
CAST IRON FITTINGS FOR PVC PIPE
(16 BAR)**

CODE 77 – R.O. TEES M/F



SIZE	75mm	90mm	110mm	125mm	140mm	160mm	200mm
TO	80mm	80mm	80mm	80mm	80mm	80mm	80mm
PRICE	R832.97	R975.56	R1 281.20	R1 540.70	R1 640.23	R1 710.00	R2 372.10

CODE 78 – SADDLES

For outlet sizes other than specified - please request a quote



SIZE	50mm	63mm	75mm	90mm	110mm	160mm	200mm	250mm
TO	20mm	20mm	20mm	20mm	20mm	25mm	25mm	25mm
PRICE	R469.89	R473.73	R515.51	R581.60	R615.00	R754.00	R1 135.41	R1 199.75
OR	25mm	25mm	25mm	25mm	25mm	40mm	40mm	40mm
PRICE	R469.89	R473.73	R515.51	R581.60	R615.00	R801.96	R1 190.60	R1 238.35



**BLUE EPOXY COATED
LM6 ALUMINIUM FITTINGS
FOR PVC PIPE (9 BAR)**



**BLACK BITUMEN COATED
CAST IRON FITTINGS FOR PVC PIPE
(16 BAR)**

CODE 80 – F.O.B TEES

**Complete
Range
Non stock
Items**



**Flange is
always TD**

**IR Rings
on page 50**

SIZE	110mm	125mm	160mm	200mm	250mm
FLANGE	100mm	100mm	150mm	150mm	200mm
OR		125mm	200mm	200mm	250mm
PRICE	R2 368.23	R2 448.63	R2 844.00	R7 376.31	R8 595.57

CODE A80 – HYDRANT TEES



**80mm Flange is
multi drilled rest
are TD**

**IR Rings
on page 50**

SIZE	75mm	90mm	110mm	160mm	200mm	250mm
FLANGE	80mm	80mm	100mm	80mm	80mm	150mm
OR				150mm	200mm	
PRICE	R1 651.00	R1 693.96	R1 976.28	R2 761.89	R5 766.82	R7 585.99

CODE A81 – SCOUR TEES

**Flange is
always
100mm
multi drilled**



**IR Rings
on page 50**

SIZE	110mm	160mm	200mm
PRICE	R2 025.00	R3 019.66	R3 891.19

LM RUBBERS (SP CODES)

CAST IRON RUBBERS (PVC CODES)

50mm	63mm	75mm	90mm	110mm	125mm	140mm	160mm	200mm	250mm	315mm
SP092	SP093	SP094	SP095	SP096	SP097	SP098	SP099	SP100	SP101	
R25.00	R40.30	R37.86	R47.13	R71.37	R91.00	R153.91	R155.25	R232.59	R492.17	
PVC092	PVC093	PVC094	PVC095	PVC096	PVC097	PVC098	PVC099	PVC100	PVC101	PVC102
R20.00	R28.00	R33.00	R34.00	R36.00	R44.00	R50.00	R59.00	R74.00	R110.00	R240.00