

# FLANGES & JIS



RUBBER INSERTION RINGS .....	Pg. 50
STEEL FLANGES.....	Pg. 51 - 53
BUTTWELD (JIS) FITTINGS .....	Pg. 54 - 58



**STEEL FLANGES  
IR RINGS**



**RUBBER INSERTION GASKET – 3MM THICK**

**RUBBER INSERTION RING - FOR SOLVENT STUB ONLY**



**For use with Solvent Stub Only**

CODE	SIZE	BOX QTY	PRICE
IRS040	40mm	10	R6.00
IRS050	50mm	10	R6.52
IRS063	63mm	10	R6.52
IRS075	75mm	10	R10.11
IRS090	90mm	10	R10.11
IRS110	110mm	10	R14.88
IRS125	125mm	10	R14.88
IRS140	140mm	10	R19.80
IRS160	160mm	10	R22.80
IRS200	200mm	10	R34.29
IRS250	250mm	10	R62.65
IRS315	315mm	10	R75.29

**INSERTION RING GASKET (IR – RING)**



**For use with PVC LM6 and Cast Iron Fittings as well as any other Flanged Fittings or Flanges**

CODE	SIZE	BOX QTY	PRICE
IR050	50mm	10	R4.66
IR065	65mm	10	R9.27
IR080	80mm	10	R9.27
IR100	100mm	10	R14.46
IR125	125mm	10	R19.66
IR150	150mm	10	R19.66
IR200	200mm	10	R29.99
IR250	250mm	10	R51.87
IR300	300mm	10	R62.00

**INSERTION FULL FACE GASKET (TD)**



**T1600 available on request.**

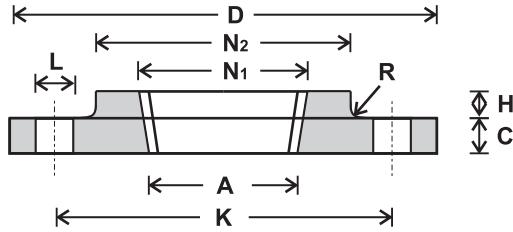
**For use with PVC LM6 and Cast Iron Fittings as well as any other Flanged Fittings or Flanges**

CODE	SIZE	BOX QTY	PRICE
IRF015	15mm	10	R5.11
IRF020	20mm	10	R5.11
IRF025	25mm	10	R5.11
IRF032	32mm	10	R5.11
IRF040	40mm	10	R8.23
IRF050	50mm	10	R10.31
IRF065	65mm	10	R15.50
IRF080	80mm	10	R15.50
IRF100	100mm	10	R20.70
IRF125	125mm	10	R29.52
IRF150	150mm	10	R39.46
IRF200	200mm	10	R45.63
IRF250	250mm	10	R101.16
IRF300	300mm	10	R107.00

**MING**

**FLANGE (SCREWED) - TABLE D**

**Temperature rating: 0°C - 350°C**  
**Suitable Application.**  
 - Water  
 - Gas  
 - Oil  
 - Petro-chemicals



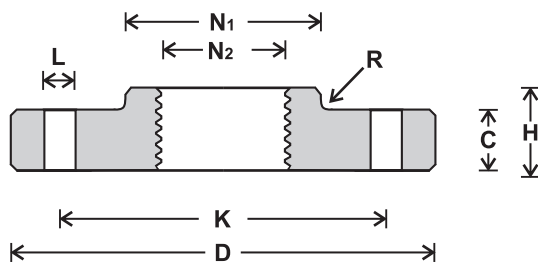
**Galvanised Plated**

**Working Pressure 10 BAR**

CODE	SIZE	D	K	L	A	C	N1	N2	H	R	HOLES	BOX QTY	PRICE
GFLS15-TD	15mm	95.3	66.8	14.5	18.7	4.8	19.7	33.3	9.5	1.6	4	10	R71.25
GFLS20-TD	20mm	101.6	73.2	14.5	24.3	4.8	25.3	38.1	11.1	1.6	4	10	R85.95
GFLS25-TD	25mm	114.3	82.6	14.5	30.5	4.8	31.7	47.6	11.1	1.6	4	10	R97.33
GFLS32-TD	32mm	120.7	87.4	14.5	39.0	6.4	40.4	55.6	11.1	1.6	4	10	R113.21
GFLS40-TD	40mm	133.4	98.6	14.5	44.9	6.4	46.3	61.9	12.7	1.6	4	10	R133.20
GFLS50-TD	50mm	152.4	114.3	17.5	56.7	7.9	58.0	74.6	12.7	1.6	4	10	R172.50
GFLS65-TD	65mm	165.1	127.0	17.5	72.2	7.9	73.7	90.5	15.9	1.6	4	10	R204.88
GFLS80-TD	80mm	184.2	146.1	17.5	85.0	9.7	86.5	106.4	15.9	1.6	4	10	R266.93
GFLS100-TD	100mm	215.9	177.8	17.5	110.1	9.7	111.6	133.4	19.1	3.2	4	10	R364.89
GFLS150-TD	150mm	279.4	235.0	17.5	164.5	12.7	166.0	185.7	19.1	3.2	8	10	R666.67

**FLANGE (SCREW ON) - TABLE 1600/4**

**Temperature rating: 0°C - 350°C**  
**Suitable Application.**  
 - Water  
 - Gas  
 - Oil  
 - Petro-chemicals



**Galvanised Plated**

**Working Pressure 16 BAR**

CODE	SIZE	D	K	L	C	N1	N2	H	R	HOLES	BOX QTY	PRICE
GFLS15-1600/4	15mm	95	65	14	8	35	21.3	12	4	4	10	R91.69
GFLS20-1600/4	20mm	105	75	14	8	45	26.9	14	4	4	10	R108.68
GFLS25-1600/4	25mm	115	85	14	8	52	33.7	14	4	4	10	R121.62
GFLS32-1600/4	32mm	140	100	18	10	60	42.4	18	6	4	10	R178.92
GFLS40-1600/4	40mm	150	110	18	10	70	48.3	17	6	4	10	R215.85
GFLS50-1600/4	50mm	165	125	18	12	85	60.3	19	6	4	10	R274.00
GFLS65-1600/4	65mm	185	145	18	12	105	76.1	23	6	4	10	R345.51
GFLS80-1600/4	80mm	200	160	18	14	118	88.9	25	8	8	10	R421.46
GFLS100-1600/4	100mm	220	180	18	14	140	114.3	31	8	8	10	R518.18
GFLS150-1600/4	150mm	285	240	22	18	195	165.0	37	10	8	10	R1 021.54

MING

FLANGE (WELD ON) - TABLE D

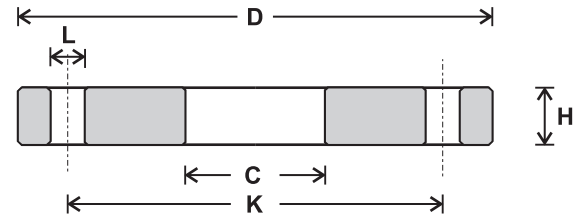
Temperature rating: 0°C - 350°C

Suitable Application.

- Water
- Gas
- Oil
- Petro-chemicals



Black Flanges



Working Pressure 10 BAR

CODE	SIZE	D	K	L	C	H	HOLES	BOX QTY	PRICE
GFL040-TD	40mm	133.4	98.4	14.3	50.0	6.3	4	10	R93.55
GFL050-TD	50mm	152.4	114.3	17.5	62.0	7.9	4	10	R104.53
GFL065-TD	65mm	165.1	127.0	17.5	78.0	7.9	4	10	R108.51
GFL080-TD	80mm	184.1	146.0	17.5	91.0	9.5	4	10	R153.24
GFL100-TD	100mm	215.9	177.8	17.5	116.0	9.5	4	10	R199.34
GFL125-TD	125mm	254.0	209.6	17.5	142.0	12.7	8	10	R338.48
GFL150-TD	150mm	279.4	235.0	17.5	168.3	12.7	8	10	R364.89
GFL200-TD	200mm	336.6	292.1	17.5	221.0	12.7	8	10	R498.50
GFL250-TD	250mm	406.4	355.6	22.2	276.0	15.9	8	10	R898.58
GFL300-TD	300mm	457.2	406.4	22.2	327.0	19.0	12	10	R1 122.00
GFL350-TD	350mm	527.1	469.9	25.4	359.0	22.2	12	10	R1 952.32

FLANGE (WELD ON) - TABLE 1600/3

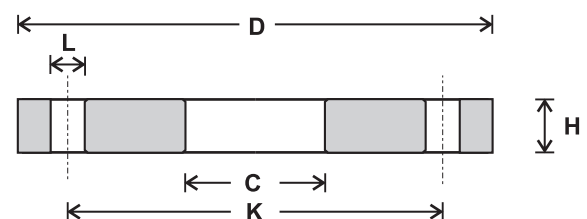
Temperature rating: 0°C - 350°C

Suitable Application.

- Water
- Gas
- Oil
- Petro-chemicals



Black Flanges



Working Pressure 16 BAR

CODE	SIZE	D	K	L	C	H	HOLES	BOX QTY	PRICE
GFL050-1600/3	50mm	165	125	18	62.0	12	4	10	R173.43
GFL065-1600/3	65mm	185	145	18	78.0	12	4	10	R196.64
GFL080-1600/3	80mm	200	160	18	91.0	14	8	10	R226.58
GFL100-1600/3	100mm	220	180	18	116.0	14	8	10	R247.10
GFL125-1600/3	125mm	250	210	18	142.0	16	8	10	R425.29
GFL150-1600/3	150mm	285	240	22	168.0	18	8	10	R487.00
GFL200-1600/3	200mm	340	295	22	221.0	22	12	10	R908.78
GFL250-1600/3	250mm	405	355	26	276.0	25	12	10	R1 142.00
GFL300-1600/3	300mm	460	410	26	327.0	28	12	10	R1 669.37
GFL350-1600/3	350mm	520	470	26	359.7	30	16	10	R2 416.70

**GALVANIZED  
CORROSION RESISTANT  
INCREASED PRODUCTIVITY**

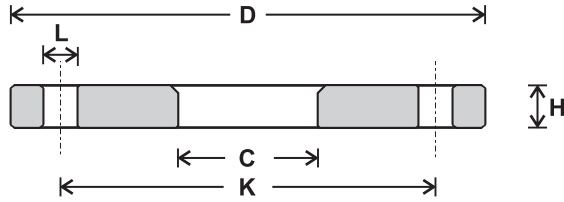


**STEEL FLANGES**

**MING**

**BACKING RING - TABLE D**

**Used with  
uPVC stubs**



**Galvanised Plated**

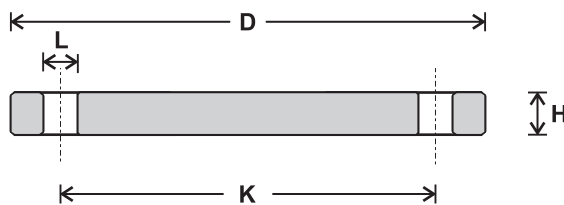
**Refer to page 153  
for uPVC Stubs**

CODE	SIZE	D	K	L	C	H	HOLES	BOX QTY	PRICE
GFL040BR-TD	40mm	120.6	87.3	14	52	6	4	10	R80.00
GFL050BR-TD	50mm	133.3	98.4	14	63	6	4	10	R92.95
GFL063BR-TD	63mm	152.4	114.3	18	78	8	4	10	R107.00
GFL075BR-TD	75mm	165.1	127.0	18	92	8	4	10	R114.60
GFL090BR-TD	90mm	184.1	146.0	18	110	10	4	10	R154.65
GFL110BR-TD	110mm	215.9	177.8	18	135	10	4	10	R205.71
GFL125BR-TD	125mm	254.0	209.6	18	149	10	8	10	R319.35
GFL140BR-TD	140mm	254.0	209.6	18	167	13	8	10	R330.10
GFL160BR-TD	160mm	279.4	235.0	18	190	13	8	10	R366.28
GFL200BR-TD	200mm	336.6	292.0	18	236	13	8	10	R513.37
GFL250BR-TD	250mm	406.4	355.6	22	280	16	8	10	R996.16
GFL315BR-TD	315mm	457.2	406.4	22	340	19	12	10	R1 255.47

**FLANGE (BLANK) - TABLE D**

**Temperature rating: 0°C - 350°C  
Suitable Application.**

- Water
- Gas
- Oil
- Petro-chemicals



CODE	SIZE	D	K	L	H	HOLES	BOX QTY	PRICE
GFLB015TD	15mm	95.3	66.7	14.3	4.8	4	10	R52.34
GFLB020TD	20mm	101.6	73.0	14.3	4.8	4	10	R46.83
GFLB025TD	25mm	114.3	82.6	14.3	4.8	4	10	R57.98
GFLB032TD	32mm	120.7	87.3	14.3	6.3	4	10	R65.96
GFLB040TD	40mm	133.4	98.4	14.3	6.3	4	10	R81.59
GFLB050TD	50mm	152.4	114.3	17.5	7.9	4	10	R117.54
GFLB065TD	65mm	165.1	127.0	17.5	7.9	4	10	R134.36
GFLB080TD	80mm	184.1	146.0	17.5	9.5	4	10	R182.77
GFLB100TD	100mm	215.9	177.8	17.5	9.5	4	10	R253.34
GFLB125TD	125mm	254.0	209.6	17.5	12.7	8	10	R453.13
GFLB150TD	150mm	279.4	235.0	17.5	12.7	8	10	R552.87
GFLB200TD	200mm	336.6	292.1	17.5	12.7	8	10	R811.20
GFLB250TD	250mm	406.4	355.6	22.2	15.9	8	10	R1 476.68
GFLB300TD	300mm	457.2	406.4	22.2	19	12	10	R2 220.76
GFLB350TD	350mm	527.1	469.9	25.4	22.2	12	10	R3 514.85
GFLB400TD	400mm	577.9	520.7	25.4	22.2	12	10	R4 244.88

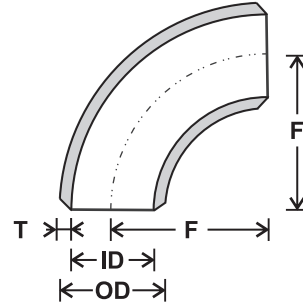
**MING BUTTWELD  
FITTINGS (JIS)  
FOR GENERAL PURPOSE APPLICATION**



**LEAK-PROOF PIPE FABRICATION  
MEDIUM-HIGH PRESSURE  
SYSTEMS**

**MING**

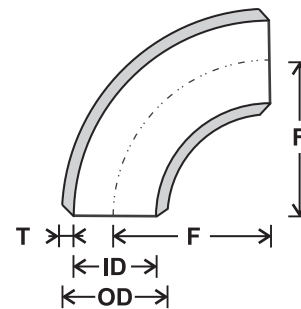
**(JIS) 90° BEND SHORT RADIUS**



**Temperature rating: 0°C - 350°C  
Working Pressure 25 BAR**

CODE	SIZE	OD	ID	T	F	PRICE
GBWSE040090	40mm	48.6	41.6	3.5	38.1	R25.96
GBWSE050090	50mm	60.5	52.9	3.8	50.8	R44.28
GBWSE065090	65mm	76.3	67.9	4.2	63.5	R68.00
GBWSE080090	80mm	89.1	80.7	4.2	76.2	R90.00
GBWSE100090	100mm	114.3	105.3	4.5	101.6	R171.47
GBWSE125090	125mm	139.8	130.8	4.5	127.0	R280.93
GBWSE150090	150mm	165.2	155.2	5.0	152.4	R425.16
GBWSE200090	200mm	219.1	207.5	5.8	203.2	R907.24
GBWSE250090	250mm	267.4	254.2	6.6	254.0	R1 700.92
GBWSE300090	300mm	318.5	304.7	6.9	304.8	R2 654.20

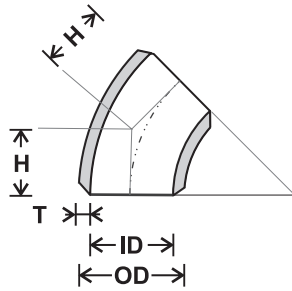
**(JIS) 90° BEND LONG RADIUS**



**Temperature rating: 0°C - 350°C  
Working Pressure 25 BAR**

CODE	SIZE	OD	ID	T	F	PRICE
GBWLE040090	40mm	48.6	41.6	3.5	57.2	R30.94
GBWLE050090	50mm	60.5	52.9	3.8	76.2	R53.42
GBWLE065090	65mm	76.3	67.9	4.2	95.3	R87.91
GBWLE080090	80mm	89.1	80.7	4.2	114.3	R124.16
GBWLE100090	100mm	114.3	105.3	4.5	152.4	R227.00
GBWLE125090	125mm	139.8	130.8	4.5	190.5	R368.87
GBWLE150090	150mm	165.2	155.2	5.0	228.6	R571.43
GBWLE200090	200mm	219.1	207.5	5.8	304.8	R1 279.91
GBWLE250090	250mm	267.4	254.2	6.6	381.0	R2 275.29
GBWLE300090	300mm	318.5	304.7	6.9	381.2	R3 483.23
GBWLE350090	350mm	355.6	339.8	7.9	457.4	R5 016.00
GBWLE400090	400mm	406.4	390.6	7.9	538.6	R6 535.60

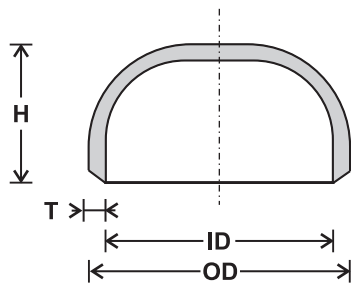
**MING  
(JIS) 45° BEND**



**Temperature rating: 0°C - 350°C  
Working Pressure 25 BAR**

CODE	SIZE	OD	ID	T	H	PRICE
GBWLE040045	40mm	48.6	41.6	3.5	23.7	R17.98
GBWLE050045	50mm	60.5	52.9	3.8	31.6	R31.39
GBWLE065045	65mm	76.3	67.9	4.2	39.5	R51.00
GBWLE080045	80mm	89.1	80.7	4.2	47.3	R71.95
GBWLE100045	100mm	114.3	105.3	4.5	63.1	R133.48
GBWLE125045	125mm	139.8	130.8	4.5	78.9	R216.00
GBWLE150045	150mm	165.2	155.2	5.0	94.7	R330.00
GBWLE200045	200mm	219.1	207.5	5.8	126.3	R681.82
GBWLE250045	250mm	267.4	254.2	6.6	157.8	R1 213.88
GBWLE300045	300mm	318.5	304.7	6.9	189.4	R1 877.55
GBWLE350045	350mm	355.6	339.8	7.9	220.9	R2 710.70

**(JIS) CAP**



**Temperature rating: 0°C - 350°C  
Working Pressure 25 BAR**

CODE	SIZE	OD	ID	T	H	PRICE
GBWC040	40mm	48.6	41.6	3.5	38.1	R15.71
GBWC050	50mm	60.5	52.9	3.8	38.1	R17.22
GBWC065	65mm	76.3	67.9	4.2	38.1	R27.87
GBWC080	80mm	89.1	80.7	4.2	50.8	R36.00
GBWC100	100mm	114.3	105.3	4.5	63.5	R67.27
GBWC150	150mm	165.2	155.2	5.0	88.9	R184.13
GBWC200	200mm	219.1	207.5	5.8	101.6	R367.94
GBWC250	250mm	267.4	254.2	6.6	127.0	R545.12
GBWC300	300mm	318.5	304.7	6.9	152.4	R839.75

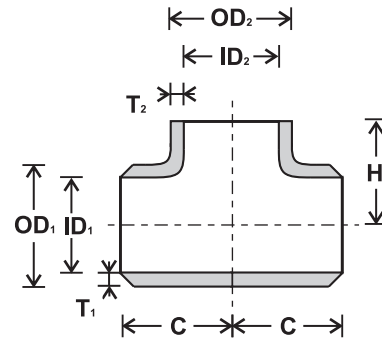
**MING BUTTWELD  
FITTINGS (JIS)  
FOR GENERAL PURPOSE APPLICATION**



**LEAK-PROOF PIPE FABRICATION  
MEDIUM-HIGH PRESSURE  
SYSTEMS**

**MING**

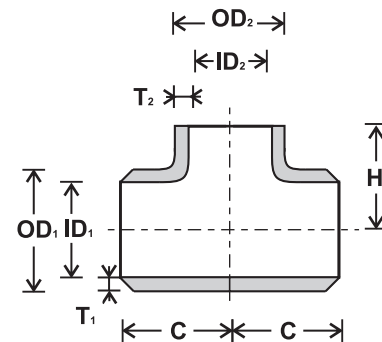
**(JIS) EQUAL TEE**



**Temperature rating: 0°C - 350°C**  
**Working Pressure 25 BAR**

CODE	SIZE	OD	ID	T	C	H	PRICE
GBWET040	40mm	48.6	41.6	3.5	57.2	57.2	R66.84
GBWET050	50mm	60.5	52.9	3.8	63.5	63.5	R82.37
GBWET065	65mm	76.3	67.9	4.2	76.2	76.2	R142.22
GBWET080	80mm	89.1	80.7	4.2	85.7	85.7	R185.94
GBWET100	100mm	114.3	105.3	4.5	104.8	104.8	R305.33
GBWET125	125mm	139.8	130.8	4.5	123.8	123.8	R460.28
GBWET150	150mm	165.2	155.2	5.0	142.9	142.9	R645.72
GBWET200	200mm	216.3	204.7	5.8	177.8	177.8	R1 276.44
GBWET250	250mm	267.4	254.2	6.6	215.9	215.9	R2 194.55
GBWET300	300mm	318.5	304.7	6.9	254.0	254.0	R3 237.21
GBWET350	350mm	355.6	339.8	7.9	279.4	279.4	R4 311.44

**(JIS) REDUCING TEE**



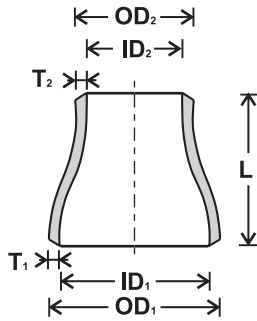
**Temperature rating: 0°C - 350°C**  
**Working Pressure 25 BAR**

CODE	SIZE	OD1 x OD2	ID1 x ID2	T1 x T2	C	H	PRICE
GBWRT050040	50mm x 40mm	60.5 x 48.6	52.9 x 41.6	3.8 x 3.5	63.5	60.3	R82.17
GBWRT065050	65mm x 50mm	76.3 x 60.5	67.9 x 52.9	4.2 x 3.8	76.2	69.9	R142.24
GBWRT080065	80mm x 65mm	89.1 x 76.3	80.7 x 67.9	4.2 x 4.2	85.7	82.6	R186.40
GBWRT100050	100mm x 50mm	114.3 x 60.5	105.3 x 52.9	4.5 x 3.8	104.8	88.9	R307.26
GBWRT100080	100mm x 80mm	114.3 x 89.1	105.3 x 80.7	4.5 x 4.2	104.8	98.4	R307.26
GBWRT150100	150mm x 100mm	165.2 x 114.3	155.2 x 105.3	5.0 x 4.5	142.9	130.2	R604.38
GBWRT200150	200mm x 150mm	216.3 x 165.2	204.7 x 155.2	5.8 x 5.0	177.8	155.6	R1 141.67
GBWRT250200	250mm x 200mm	267.4 x 216.3	260.8 x 210.5	6.6 x 5.8	215.9	203.2	R1 910.68



**MING**

**(JIS) CONCENTRIC REDUCER**



**Temperature rating: 0°C - 350°C  
Working Pressure 25 BAR**

CODE	SIZE	OD1 x OD2	ID1 x ID2	T1 x T2	L	PRICE
GBWCR040015	40mm x 15mm	48.6 x 21.7	41.6 x 16.1	3.5 x 2.8	63.5	R49.90
GBWCR040020	40mm x 20mm	48.6 x 27.2	41.6 x 21.6	3.5 x 2.8	63.5	R39.93
GBWCR040025	40mm x 25mm	48.6 x 34.0	41.6 x 27.6	3.5 x 3.2	63.5	R33.89
GBWCR040032	40mm x 32mm	48.6 x 42.7	41.6 x 35.7	3.5 x 3.5	63.5	R29.46
GBWCR050020	50mm x 20mm	60.5 x 27.2	52.9 x 21.6	3.8 x 2.8	76.2	R60.37
GBWCR050025	50mm x 25mm	60.5 x 34.0	52.9 x 27.6	3.8 x 3.2	76.2	R51.00
GBWCR050032	50mm x 32mm	60.5 x 42.7	52.9 x 35.7	3.8 x 3.5	76.2	R44.91
GBWCR050040	50mm x 40mm	60.5 x 48.6	52.9 x 41.6	3.8 x 3.5	76.2	R42.17
GBWCR065025	65mm x 25mm	76.3 x 34.0	67.9 x 27.6	4.2 x 3.2	88.9	R102.19
GBWCR065032	65mm x 32mm	76.3 x 42.7	67.9 x 35.7	4.2 x 3.5	88.9	R82.83
GBWCR065040	65mm x 40mm	76.3 x 48.6	67.9 x 41.6	4.2 x 3.5	88.9	R69.61
GBWCR065050	65mm x 50mm	76.3 x 60.5	67.9 x 52.9	4.2 x 3.8	88.9	R64.60
GBWCR080032	80mm x 32mm	89.1 x 42.7	80.7 x 35.7	4.2 x 3.5	88.9	R103.77
GBWCR080040	80mm x 40mm	89.1 x 48.6	80.7 x 41.6	4.2 x 3.5	88.9	R93.27
GBWCR080050	80mm x 50mm	89.1 x 60.5	80.7 x 52.9	4.2 x 3.8	101.6	R82.22
GBWCR080065	80mm x 65mm	89.1 x 76.3	80.7 x 67.9	4.2 x 4.2	101.6	R71.20
GBWCR100050	100mm x 50mm	114.3 x 60.5	105.3 x 52.9	4.5 x 3.8	101.6	R142.22
GBWCR100065	100mm x 65mm	114.3 x 76.3	105.3 x 67.9	4.5 x 4.2	101.6	R131.69
GBWCR100080	100mm x 80mm	114.3 x 89.1	105.3 x 80.7	4.5 x 4.2	101.6	R120.11
GBWCR125065	125mm x 65mm	139.8 x 76.3	130.8 x 67.9	4.5 x 4.2	127.0	R239.27
GBWCR125080	125mm x 80mm	139.8 x 89.1	130.8 x 80.7	4.5 x 4.2	127.0	R217.21
GBWCR125100	125mm x 100mm	139.8 x 114.3	130.8 x 105.3	4.5 x 4.5	127.0	R205.61
GBWCR150065	150mm x 65mm	165.2 x 76.3	155.2 x 67.9	5.0 x 4.2	139.7	R347.24
GBWCR150080	150mm x 80mm	165.2 x 89.1	155.2 x 80.7	5.0 x 4.2	139.7	R304.75
GBWCR150100	150mm x 100mm	165.2 x 114.3	155.2 x 105.3	5.0 x 4.5	139.7	R271.62
GBWCR150125	150mm x 125mm	165.2 x 139.8	155.2 x 130.8	5.0 x 4.5	139.7	R261.70
GBWCR200080	200mm x 80mm	216.3 x 89.1	204.7 x 80.7	5.8 x 4.2	152.4	R600.00
GBWCR200100	200mm x 100mm	216.3 x 114.3	204.7 x 105.3	5.8 x 4.5	152.4	R475.99
GBWCR200125	200mm x 125mm	216.3 x 139.8	204.7 x 130.8	5.8 x 4.5	152.4	R443.41
GBWCR200150	200mm x 150mm	216.3 x 165.2	204.7 x 155.2	5.8 x 5.0	152.4	R410.28
GBWCR250125	250mm x 125mm	267.4 x 139.8	254.2 x 130.8	6.6 x 4.5	177.8	R870.41
GBWCR250150	250mm x 150mm	267.4 x 165.2	254.2 x 155.2	6.6 x 5.0	177.8	R794.20
GBWCR250200	250mm x 200mm	267.4 x 216.3	254.2 x 204.7	6.6 x 5.8	177.8	R740.10
GBWCR300150	300mm x 150mm	318.5 x 165.2	304.7 x 155.2	6.9 x 5.0	203.2	R1 188.45
GBWCR300200	300mm x 200mm	318.5 x 216.3	304.7 x 204.7	6.9 x 5.8	203.2	R1 100.66
GBWCR300250	300mm x 250mm	318.5 x 267.4	304.7 x 254.2	6.9 x 6.6	203.2	R1 024.51
GBWCR350200	350mm x 200mm	355.6 x 216.3	339.8 x 202.5	7.9 x 6.9	330.2	R2 315.70
GBWCR350250	350mm x 250mm	355.6 x 267.4	339.8 x 254.2	7.9 x 6.6	330.2	R2 097.00
GBWCR350300	350mm x 300mm	355.6 x 318.5	339.8 x 304.7	7.9 x 6.9	330.2	R1 988.85

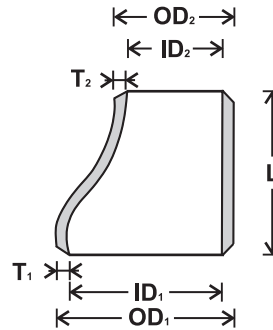
**MING BUTTWELD  
FITTINGS (JIS)  
FOR GENERAL PURPOSE APPLICATION**



**LEAK-PROOF PIPE FABRICATION  
MEDIUM-HIGH PRESSURE  
SYSTEMS**

**MING**

**(JIS) ECCENTRIC REDUCER**



**Temperature rating: 0°C - 350°C**  
**Working Pressure 25 BAR**

CODE	SIZE	OD1 x OD2	ID1 x ID2	T1 x T2	L	PRICE
GBWER040015	40mm x 15mm	48.6 x 21.7	41.6 x 16.1	3.5 x 2.8	63.5	R66.44
GBWER040020	40mm x 20mm	48.6 x 27.2	41.6 x 21.6	3.5 x 2.8	63.5	R51.56
GBWER040025	40mm x 25mm	48.6 x 34.0	41.6 x 27.6	3.5 x 3.2	63.5	R42.17
GBWER040032	40mm x 32mm	48.6 x 42.7	41.6 x 35.7	3.5 x 3.5	63.5	R36.66
GBWER050020	50mm x 20mm	60.5 x 27.2	52.9 x 21.6	3.8 x 2.8	76.2	R78.60
GBWER050025	50mm x 25mm	60.5 x 34.0	52.9 x 27.6	3.8 x 3.2	76.2	R62.59
GBWER050032	50mm x 32mm	60.5 x 42.7	52.9 x 35.7	3.8 x 3.5	76.2	R57.07
GBWER050040	50mm x 40mm	60.5 x 48.6	52.9 x 41.6	3.8 x 3.5	76.2	R51.00
GBWER065025	65mm x 25mm	76.3 x 34.0	67.9 x 27.6	4.2 x 3.2	88.9	R156.82
GBWER065032	65mm x 32mm	76.3 x 42.7	67.9 x 35.7	4.2 x 3.8	88.9	R113.21
GBWER065040	65mm x 40mm	76.3 x 48.6	67.9 x 41.6	4.2 x 3.5	88.9	R91.66
GBWER065050	65mm x 50mm	76.3 x 60.5	67.9 x 52.9	4.2 x 3.5	88.9	R80.64
GBWER080032	80mm x 32mm	89.1 x 42.7	80.7 x 35.7	4.2 x 3.5	88.9	R174.97
GBWER080040	80mm x 40mm	89.1 x 48.6	80.7 x 41.6	4.2 x 3.5	88.9	R136.88
GBWER080050	80mm x 50mm	89.1 x 60.5	80.7 x 52.9	4.2 x 3.8	88.9	R109.84
GBWER080065	80mm x 65mm	89.1 x 76.3	80.7 x 67.9	4.2 x 4.2	88.9	R98.79
GBWER100050	100mm x 50mm	114.3 x 60.5	105.3 x 52.9	4.5 x 3.8	101.6	R195.74
GBWER100065	100mm x 65mm	114.3 x 76.3	105.3 x 67.9	4.5 x 4.2	101.6	R153.24
GBWER100080	100mm x 80mm	114.3 x 89.1	105.3 x 80.7	4.5 x 4.2	101.6	R131.69
GBWER125065	125mm x 65mm	139.8 x 76.3	130.8 x 67.9	4.5 x 4.2	127.0	R402.15
GBWER125080	125mm x 80mm	139.8 x 89.1	130.8 x 80.7	4.5 x 4.2	127.0	R325.97
GBWER125100	125mm x 100mm	139.8 x 114.3	130.8 x 105.3	4.5 x 4.5	127.0	R293.39
GBWER150065	150mm x 65mm	165.2 x 76.3	155.2 x 67.9	5.0 x 4.2	139.7	R543.81
GBWER150080	150mm x 80mm	165.2 x 89.1	155.2 x 80.7	5.0 x 4.2	139.7	R413.50
GBWER150100	150mm x 100mm	165.2 x 114.3	155.2 x 105.3	5.0 x 4.5	139.7	R358.85
GBWER150125	150mm x 125mm	165.2 x 139.8	155.2 x 130.8	5.0 x 4.5	139.7	R304.75
GBWER200080	200mm x 80mm	216.3 x 89.1	204.7 x 80.7	5.8 x 4.2	152.4	R823.36
GBWER200100	200mm x 100mm	216.3 x 114.3	204.7 x 105.3	5.8 x 4.5	152.4	R770.26
GBWER200125	200mm x 125mm	216.3 x 139.8	204.7 x 130.8	5.8 x 4.5	152.4	R716.14
GBWER200150	200mm x 150mm	216.3 x 165.2	204.7 x 155.2	5.8 x 5.0	177.8	R573.69
GBWER250125	250mm x 125mm	267.4 x 139.8	254.2 x 130.8	6.6 x 4.5	177.8	R1 359.54
GBWER250150	250mm x 150mm	267.4 x 165.2	254.2 x 155.2	6.6 x 5.0	177.8	R1 087.95
GBWER250200	250mm x 200mm	267.4 x 216.3	254.2 x 204.7	6.6 x 5.8	177.8	R923.96
GBWER300200	300mm x 200mm	318.5 x 216.3	304.7 x 204.7	6.9 x 5.8	203.2	R1 862.57
GBWER300250	300mm x 250mm	318.5 x 267.4	304.7 x 254.2	6.9 x 6.6	203.2	R1 318.78
GBWER350300	350mm x 300mm	355.6 x 318.5	339.8 x 304.7	7.9 x 6.9	330.2	R2 533.24