

# TRAVELLING IRRIGATORS



IU CRAWLER .....	Pg. 166
ROTRIX .....	Pg. 167 - 168
OCMIS .....	Pg. 169 - 173



**ROTRIXAFRICA**  
industries cc  
MECHANISED IRRIGATION SYSTEMS  
BUILT TO IRRIGATE AFRICA

# IU CRAWLER



## IU CRAWLER

### IU50

(Up to 40m lane spacing)



- Maximum capacity 18m<sup>3</sup>/h
- 200m x 3mm diameter galvanised cable
- 100m x 50mm OROFLEX lay flat hose
- Aluminium CAMLOCK male connection
- Solid 350mm rubber wheels
- Hose Reel
- Full hot dipped galvanised
- 1 x SIME JOLLY sprinkler

CODE	PRICE
R-IU50	On request
<b>For Sprinkler Specifications see Page 130</b>	

### Average Run 8hr/200m @ 3 BAR

NOZZLE SIZE (in mm)	PRESSURE (BAR)	RADIUS (m)	FLOW (m <sup>3</sup> /h)	LANE SPACING (m)	APPLICATION PER RUN (mm)
10.00	2	19	6.4	26	8.0
	3	21	7.8	30	8.5
	4	22.5	9.0	36	8.5
	5	23.5	10.2	36	9.5
12.00	2	21	8.9	30	10.0
	3	23.5	10.9	36	10.0
	4	26	12.6	36	11.5
	5	28	14.2	30	16.0
14.00	2	22.5	11.8	36	11.0
	3	24	14.4	36	13.5
	4	27	16.7	36	15.5
	5	29	18.6	40	16.0

### IU65

(Up to 50m lane spacing)



- Maximum capacity 35m<sup>3</sup>/h
- 200m x 4mm diameter galvanised cable
- 100m x 63mm OROFLEX lay flat hose
- Aluminium CAMLOCK male connection
- Solid 350mm rubber wheels
- Hose Reel
- Full hot dipped galvanised
- 1 x SIME SENIOR sprinkler

CODE	PRICE
R-IU65	On request
<b>For Sprinkler Specifications see Page 134</b>	

### Average Run 8hr/200m @ 3 BAR

NOZZLE SIZE (in mm)	PRESSURE (BAR)	RADIUS (m)	FLOW (m <sup>3</sup> /h)	LANE SPACING (m)	APPLICATION PER RUN (mm)
16.00	2	24	14.8	36	14.0
	3	30	18.2	40	15.5
	4	34	21.0	45	16.0
	5	36	23.4	50	16.0
18.00	2	24	18.5	36	17.0
	3	32	22.7	45	17.0
	4	35	26.2	45	20.0
	5	38	29.2	50	20.0
20.00	2	25	22.5	36	21.0
	3	33	27.6	45	21.0
	4	37	31.9	45	23.0
	5	41	35.6	50	24.0

## ROTRIX

### RHINO



- Maximum capacity 35m<sup>3</sup>/h
- 300m x 5mm diameter galvanised cable
- 150m x 63mm Oroflex lay flat hose
- 2 x SIME Jolly sprinklers
- 4 to 1 ratio "manual and PTO hose winder"
- 36m wetted diameter
- 300m travel distance
- Standard 4 wheels and adjustable chassis
- 70mm PERROT Male connection

CODE	PRICE
R - RHINO	On Request
<b>For Sprinkler Specifications see Page 130</b>	

### RAINMAKER



- Maximum capacity 35m<sup>3</sup>/h
- 200m x 5mm diameter galvanised cable
- 100m x 63mm Oroflex lay flat hose
- 2 x SIME Jolly sprinklers
- 4 to 1 ratio "manual hose winder"
- 36m wetted diameter
- 200m travel distance
- 70mm PERROT Male connection

CODE	PRICE
R - RAINMAKER	On Request
<b>For Sprinkler Specifications see Page 130</b>	

### GREENKEEPER



- Maximum capacity 16m<sup>3</sup>/h
- 200m x 4mm diameter galvanised cable
- 100m x 50mm Oroflex lay flat hose
- 1 x SIME Jolly sprinkler
- 4 to 1 ratio "manual hose winder"
- 36m wetted diameter
- 200m travel distance
- 50mm PERROT Male connection

CODE	PRICE
R - GREENKEEPER	On Request
<b>For Sprinkler Specifications see Page 130</b>	

### CLUBMAN



- Maximum capacity 16m<sup>3</sup>/h
- 100m x 4mm diameter galvanised cable
- 50m x 50mm Oroflex lay flat hose
- 1 x SIME Jolly sprinkler
- 36m wetted diameter
- 100m travel distance
- 50mm PERROT Male connection

CODE	PRICE
R - CLUBMAN	On Request
<b>For Sprinkler Specifications see Page 130</b>	

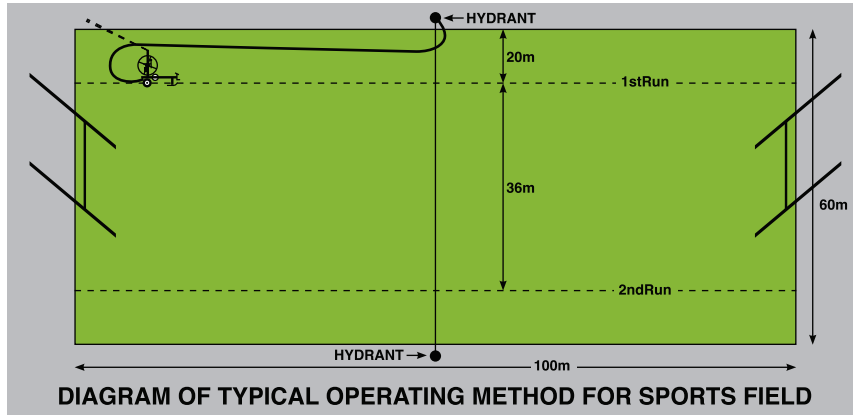
### SPORTSMAN



- Maximum capacity 6m<sup>3</sup>/h
- 120m x 3mm diameter galvanised cable
- 60m x 25mm Oroflex lay flat hose
- 1 x SIME Ibis sprinkler
- 26m wetted diameter
- 120m travel distance
- 25mm GEKA connection

CODE	PRICE
R - SPORTSMAN	On Request
<b>For Sprinkler Specifications see Page 128</b>	

## ROTRIX



## ADVANTAGES

- Labour saving system
- Low installation costs
- Irrigates large areas without supervision
- Water application can be well managed
- Irrigation done by one or two operators
- Can be used with existing pumps and mainlines
- Quick set - up times and easy to move between fields
- Can be safely stored away for security against theft
- Replaces quick coupling and drag line systems
- No hassles with blocked or damaged pop-up systems

## SPORTSMAN (Average Run 5hr/120m)

NOZZLE SIZE (in mm)	PRESSURE (BAR)	RADIUS (m)	FLOW (m <sup>3</sup> /h)	LANE SPACING (m)	APPLICATION PER RUN (mm)
6.00	2	15	2.8	22	4.5
	3	17	3.4	24	5.0
	4	18	3.9	24	6.0
8.00	2	17	4.3	24	6.5
	3	18	5.2	24	7.5
	4	19	6.0	26	8.0

## CLUBMAN / GREENKEEPER (Average Run 4hr/100m or 8hr/200m)

NOZZLE SIZE (in mm)	PRESSURE (BAR)	RADIUS (m)	FLOW (m <sup>3</sup> /h)	LANE SPACING (m)	APPLICATION PER RUN (mm)
10.00	2	19	6.4	26	8.0
	3	21	7.8	30	8.5
	4	22.5	9.0	36	8.5
	5	23.5	10.2	36	9.5
12.00	2	21	8.9	30	10.0
	3	23.5	10.9	36	10.0
	4	26	12.6	36	11.5
14.00	5	28	14.2	30	16.0
	2	22.5	11.8	36	11.0
	3	24	14.4	36	13.5
	4	27	16.7	36	15.5
	5	29	18.6	40	16.0

## RAINMAKER

	NOZZLE SIZE	PRESSURE kPa	No. of NOZZLES	FLOW m <sup>3</sup> /h	LANE SPACING	AVERAGE APPLICATION mm		PRESSURE AT HYDRANT kPa	WETTED Dia m
						6 h RUN	12 h RUN		
IDEAL FOR GERMINATION OF SEED BEDS COMBINED WITH FASTER SPROCKET SET	9mm	300	2	10,6	36m	8,2	16,4	330	44
	10mm	300	2	13,2	36m	11,0	22,0	330	45
	11mm	300	2	16	36m	13,2	26,4	340	46
	12mm	300	2	20,4	36m	15,5	31,0	350	47
SMALL DROPLET POPULATION WITH GOOD RAIN CURTAIN	13mm	300	2	22,5	36m	18,1	36,2	360	49
	14mm	300	2	25,2	36m	21,3	42,6	360	50
	15mm	300	2	31,0	36m	24,1	48,2	380	51
	16mm	300	2	33,0	36m	25,8	51,6	430	51

### WATER APPLICATION FORMULA

$$\text{Flow in m}^3/\text{h} = \frac{\text{mm} \times 10 \times \text{area (L} \times \text{W) m}}{10\,000 \times 0.85 \text{ (efficiency) } \times t}$$

m<sup>3</sup>/h = Volume of Water supplied to Nozzles per Hour

t = Available time in hours per day and days per month to meet peak monthly irrigation requirement.

mm = Gross depth of water applied per peak month.

Area = Total area irrigated.

L = Length of land (m)

W = Width of land (m)

**Note: Days per month is usually 25 to allow for downtime, etc.**

The side panels are galvanised and powder coated with blue and white paint

The drum is supported by a big waterproof bearing increasing the drum life



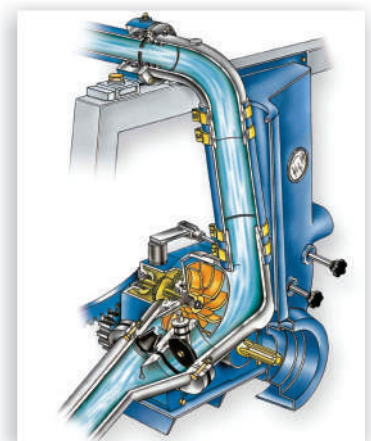
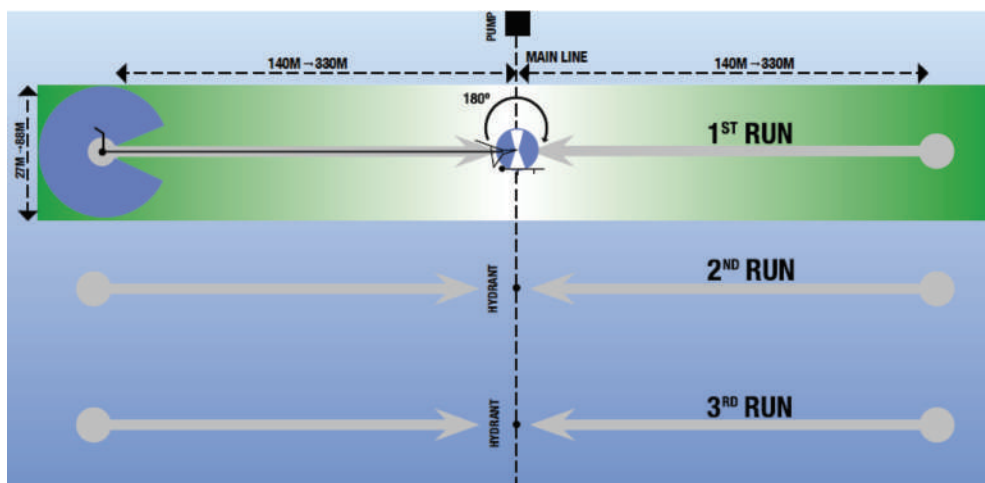
Sprinkler trolley has four wheels on R2/2 and R2/1 models and comes with adjustable track on all machines

The drum and chassis are made of steel, hot-dip galvanised and entirely welded by robots

All machines are equipped with proper agricultural wheels

Model	Pipe Diameter	Pipe Length	Application	Irrigated HA/Week
R2/2	100mm	300m	Agriculture	± 30
R1/1	75mm	220m	Agriculture	± 20
MRR	58mm	200m	Agriculture	± 12
MR	40mm	130m	Sportsfields	± 3

For specifications on the above machines see pages 170 - 173



The choke flow turbine with the impeller mounted directly onto the inlet shaft of the gearbox reduces head losses and allows the machines to give wider speed range even when the flow and the inlet pressure of the machine is low.



**OCMIS**

**OCMIS  
MR (40/130)**

**OCMIS**

A	B	C	D	E	F	G			GB
						mm	bar	Pressure inlet Machine	
Nozzle	Pressure at the Rain-gun	Rain-Gun Throw	Recommended area to be irrigate 80%	Delivery	Irrigated Area	Working Speed	Rain rate in (mm)	Recommended Speed on the gearbox	

Standard nozzle size:  
8, 9 and 10mm  
Price on request due to  
exchange rate

G																
mm DI PIOGGIA SULLA FASCIA IRRIGATA E PRESSIONE NECESSARIA ALLA MACCHINA																
BOCC IRR.	GIT. IRR.	FASCIA Q = PORTATA CONS. Lt/h	M3/h	AREA POST.	mm											
					10	15	20	25	30	35	40	50	60			
mm	bar	mt	mtx80%	H <sub>a</sub>	mm	bar	mm	bar	mm	bar	mm	bar	mm	bar		
8	2,0	17	27	57	3420	3,4	8	3,3	6	3,2	5	3,2	4	3,2		
	3,0	19	30	69	4140	4,7	9	4,6	7	4,5	5	4,5	5	4,5		
	4,0	20,5	33	80	4800	6,0	10	5,9	7	5,8	6	5,8	5	5,8		
9	2,0	17,5	28	71	4260	3,7	10	3,6	8	3,5	6	3,5	5	3,5		
	3,0	19,5	31	87	5220	5,2	11	5,1	8	5,0	7	5,0	6	5,0		
	4,0	21	34	100	6000	6,6	12	6,5	9	6,4	7	6,4	6	6,4		
10	2,0	18	29	88	5280	4,2	12	4,1	9	4,0	7	4,0	6	4,0		
	3,0	20,5	33	107	6420	5,8	13	5,7	10	5,6	8	5,6	7	5,6		
	4,0	22	35	124	7440	7,4	14	7,3	11	7,2	8	7,2	7	7,2		
12	2,0	19	30	127	7620	5,6	17	5,5	13	5,4	10	5,4	8	5,4		
	3,0	21	34	155	9300	7,7	18	7,6	14	7,5	11	7,5	9	7,5		



This data given is as an indication only. It is calculated on the basis of mathematical formulas and average working conditions of machines.

We decline any responsibilities connected with the use of this information. Updated on 12/2004.

**- 40mm (OD) Hose X 130m Long**



### OCMIS



A	B	C	D	E	F	G	G	G	G	G				GB							
										BOCC IRR.	IRR.	FASCIA Q = PORTATA	M3/h		POST.	mm DI PIOGGIA SULLA FASCIA IRRIGATA E PRESSIONE NECESSARIA ALLA MACCHINA					
mm	bar	mt	CON.	Lt/Min	M3/h	AREA	10	15	20					25		30	35	40	50	60	
	2,0	20	32	152	9.120	9.12	0.67	29	3.5	19	3.4	14	3.3	10	3.3	8	3.2				
	3,0	24	38	182	10.920	10.92	0.82	28	4.7	19	4.6	14	4.5	9	4.5	8	4.4				
	4,0	27	43	211	12.660	12.66	0.94	29	6.0	20	5.9	15	5.8	10	5.8	8	5.7				
	2,0	21	34	195	11.700	11.70	0.71	35	3.9	23	3.8	17	3.7	12	3.7	10	3.6	9	3.6		
	3,0	25	40	239	14.340	14.34	0.86	36	5.4	24	5.3	18	5.2	12	5.2	10	5.1	9	5.1		
	4,0	29	46	277	16.620	16.62	1.02	36	6.9	24	6.8	18	6.7	14	6.7	10	6.6	9	6.6		
	5,0	31	50	309	18.540	18.54	1.10	37	8.3	25	8.2	19	8.1	15	8.1	11	8.0	9	8.0		
	2,0	22	35	247	14.820	14.82	0.75	42	4.5	28	4.4	21	4.3	17	4.3	12	4.2	11	4.2	8	4.2
	3,0	26	42	303	18.180	18.18	0.90	44	6.2	29	6.1	22	6.0	17	6.0	12	5.9	11	5.9	9	5.9
	4,0	30	48	351	21.060	21.06	1.06	44	8.0	29	7.9	22	7.8	18	7.8	13	7.7	11	7.7	9	7.7

Standard nozzle size:  
12, 14 and 16mm  
Price on request due to  
exchange rate

This data given is as an indication only. It is calculated on the basis of mathematical formulas and average working conditions of machines.  
We decline any responsibilities connected with the use of this information. Updated on 12/2004.



**- 58mm (OD) Hose X 200m Long**



**OCMIS**

**OCMIS  
R1/1 (75/220)**



**OCMIS**

A	B	C	D	E	F		G		GB														
					mm	bar	mm	bar															
Nozzle	Pressure at the Rain-gun	Rain-Gun Throw	Recommended area to be irrigate 80%	Delivery	Irrigated Area	Working Speed	Rain rate in (mm)		Recommended Speed on the gearbox														
							mm	bar		mm	bar												
BOCC IRR.	IRR.	GIT. FASCIA Q = PORTATA	M3/h	AREA POST.	G																		
					mm DI PIOGGIA SULLA FASCIA IRRIGATA E PRESSIONE NECESSARIA ALLA MACCHINA																		
mm	bar	mt	mtx80%	mt	bar	mm	bar	mm	bar	mm	bar	mm	bar	mm	bar	mm	bar						
16	3,0	32	51	276	16,560	1,24	32	4,6	22	4,5	16	4,4	13	4,3	11	4,3	9	4,3	8	4,3			
	4,0	36	58	320	19,200	1,42	33	5,8	22	5,7	17	5,6	13	5,5	11	5,5	10	5,5	8	5,5			
	4,5	37	59	338	20,280	1,46	34	6,4	23	6,3	17	6,2	14	6,1	11	6,1	10	6,1	9	6,1			
	5,0	39	62	356	21,360	1,55	34	7,0	23	6,9	17	6,8	14	6,7	11	6,7	10	6,7	9	6,7			
	5,5	41	66	373	22,380	1,65	34	7,6	23	7,5	17	7,4	14	7,3	11	7,3	10	7,3	9	7,3			
	marce consigliate										3	2	1	1	1	1	1	1	1	1	1		
18	3,0	33	53	350	21,000	1,28	40	5,0	27	4,9	20	4,8	16	4,7	13	4,7	11	4,7	10	4,7	8	4,7	
	4,0	37	59	404	24,240	1,46	41	6,3	27	6,2	20	6,1	16	6,0	14	6,0	12	6,0	10	6,0	8	6,0	
	4,5	39	62	429	25,740	1,55	41	6,9	28	6,8	21	6,7	17	6,6	14	6,6	12	6,6	10	6,6	8	6,6	
	5,0	41	66	452	27,120	1,65	41	7,6	28	7,5	21	7,4	17	7,3	14	7,3	12	7,3	10	7,3	8	7,3	
	5,5	42	67	474	28,440	1,69	42	8,3	28	8,2	21	8,1	17	8,0	14	8,0	12	8,0	11	8,0	8	8,0	
	marce consigliate										3	2	2	1	1	1	1	1	1	1	1	1	
20	3,0	35	56	432	25,920	1,37	46	5,5	31	5,4	23	5,3	19	5,2	15	5,2	13	5,2	12	5,2	8	5,1	
	4,0	39	62	501	30,060	1,55	48	7,0	32	6,9	24	6,8	19	6,7	16	6,7	14	6,7	12	6,7	10	6,6	
	4,5	41	66	531	31,860	1,65	49	7,7	32	7,6	24	7,5	19	7,4	16	7,4	14	7,4	12	7,4	10	7,3	
	5,0	43	69	560	33,600	1,74	49	8,4	33	8,3	24	8,2	20	8,1	16	8,1	14	8,1	12	8,1	10	8,0	
	5,5	44	70	586	35,160	1,79	50	9,1	33	9,0	25	8,9	20	8,8	17	8,8	14	8,8	12	8,8	10	8,7	
	marce consigliate										3	2	2	1	1	1	1	1	1	1	1	1	
22	2,0	32	51	430	25,800	1,24	50	4,5	34	4,4	25	4,3	20	4,2	17	4,2	14	4,2	13	4,2	8	4,1	
	3,0	37	59	522	31,320	1,46	53	6,1	35	6,0	26	5,9	21	5,8	18	5,8	15	5,8	13	5,8	11	5,7	
	4,0	41	66	604	36,240	1,65	55	7,8	37	7,7	28	7,6	22	7,5	18	7,5	16	7,5	14	7,5	11	7,4	
	4,5	42	67	641	38,460	1,69	57	8,6	38	8,5	29	8,4	23	8,3	19	8,3	16	8,3	14	8,3	11	8,2	
	5,0	45	72	676	40,560	1,84	56	9,5	38	9,4	28	9,3	23	9,2	19	9,2	16	9,2	14	9,2	11	9,1	
	5,5	46	74	708	42,480	1,88	58	10,3	38	10,2	29	10,1	23	10,0	19	10,0	16	10,0	14	10,0	12	9,9	
	marce consigliate										3	2	2	1	1	1	1	1	1	1	1	1	1

Standard nozzle size:  
18, 20 and 22mm  
Price on request due to  
exchange rate

This data given is as an indication only. It is calculated on the basis of mathematical formulas and average working conditions of machines. We decline any responsibilities connected with the use of this information. Updated on 12/2004.

**- 75mm (OD) Hose X 220m Long**



### OCMIS

A	B	C	D	E	F	G					GB
						mmth	mm	bar	mmth	mm	
Nozzle	Pressure at the Rain-gun	Rain-Gun Throw	Recommended area to be irrigate 80%	Delivery	Irrigated Area	Working Speed	Rain rate in (mm)	Pressure inlet Machine	Recommended Speed on the gearbox		

Standard nozzle size: 22, 24, and 26mm  
Price on request due to exchange rate

BOCC IRR.	mm	GIT. IRR.	FASCIA CONS.	Q = PORTATA Lt/Min	AREA POST.	G																										
						mm DI PIOGGIA SULLA FASCIA IRRIGATA E PRESSIONE NECESSARIA ALLA MACCHINA																										
mm	bar	mt	mx80%	H <sub>a</sub>	POST.	10			15			20			25			30			35			40			50			60		
						mm	bar	mt	mm	bar	mt	mm	bar	mt	mm	bar	mt	mm	bar	mt	mm	bar	mt	mm	bar	mt	mm	bar	mt	mm	bar	mt
24	3.0	39	62	623	37.38	2.04	60	4.8	40	4.6	30	4.5	24	4.4	20	4.4	17	4.4	15	4.3	12	4.3	10	4.3	10	4.3	10	4.3	10	4.3		
	4.0	44	70	720	43.20	2.35	61	6.4	41	6.2	31	6.1	25	6.0	20	6.0	18	6.0	15	5.9	12	5.9	10	5.9	10	5.9	10	5.9	10	5.9		
	4.5	46	74	764	45.84	2.47	62	7.0	42	6.8	31	6.7	25	6.6	21	6.6	18	6.6	16	6.5	12	6.5	10	6.5	10	6.5	10	6.5	10	6.5		
	5.0	48	77	806	48.36	2.60	63	7.7	42	7.5	31	7.4	25	7.3	21	7.3	18	7.3	16	7.2	13	7.2	10	7.2	10	7.2	10	7.2	10	7.2		
	5.5	50	80	844	50.64	2.72	63	8.3	42	8.1	32	8.0	25	7.9	21	7.9	18	7.9	16	7.8	13	7.8	11	7.8	11	7.8	11	7.8	11	7.8		
	marce consigliate						2.2	3.1	3.1	3.1	3.1	3.1	1.2	2.1	2.1	2.1	2.1	2.1	2.1	2.1	2.1	1.1	1.1	1.1	1.1	1.1	1.1	1.1	1.1	1.1		
26	3.0	41	66	732	43.92	2.17	67	5.4	45	5.2	33	5.1	27	5.0	22	5.0	19	5.0	17	4.9	13	4.9	11	4.9	11	4.9	11	4.9	11	4.9		
	4.0	46	74	846	50.76	2.47	69	6.8	46	6.6	34	6.5	28	6.4	23	6.4	20	6.4	17	6.3	14	6.3	11	6.3	11	6.3	11	6.3	11	6.3		
	4.5	48	77	898	53.88	2.60	70	7.5	47	7.3	35	7.2	28	7.1	23	7.1	20	7.1	18	7.0	14	7.0	12	7.0	12	7.0	12	7.0	12	7.0		
	5.0	51	82	946	56.76	2.78	70	8.2	46	8.0	35	7.9	28	7.8	23	7.8	20	7.8	17	7.7	14	7.7	12	7.7	12	7.7	12	7.7	12	7.7		
	5.5	52	83	991	59.46	2.85	71	8.9	48	8.7	36	8.6	29	8.5	24	8.5	20	8.5	18	8.4	14	8.4	12	8.4	12	8.4	12	8.4	12	8.4		
	marce consigliate						2.2	3.1	3.1	3.1	3.1	3.1	1.2	2.1	2.1	2.1	2.1	2.1	2.1	2.1	2.1	1.1	1.1	1.1	1.1	1.1	1.1	1.1	1.1	1.1		
28	3.0	44	70	848	50.88	2.35	72	5.8	48	5.6	36	5.5	29	5.4	24	5.4	21	5.4	18	5.3	14	5.3	12	5.3	12	5.3	12	5.3	12	5.3		
	4.0	48	77	981	58.86	2.60	77	7.3	51	7.1	38	7.0	31	6.9	26	6.9	22	6.9	19	6.8	15	6.8	13	6.8	13	6.8	13	6.8	13	6.8		
	4.5	50	80	1040	62.40	2.72	78	8.1	52	7.9	39	7.8	31	7.7	26	7.7	22	7.7	20	7.6	16	7.6	13	7.6	13	7.6	13	7.6	13	7.6		
	5.0	52	83	1096	65.76	2.85	79	8.9	53	8.7	40	8.6	32	8.5	26	8.5	23	8.5	20	8.4	16	8.4	13	8.4	13	8.4	13	8.4	13	8.4		
	5.5	54	86	1149	68.94	2.97	80	9.6	53	9.4	40	9.3	32	9.2	27	9.2	23	9.2	20	9.1	16	9.1	13	9.1	13	9.1	13	9.1	13	9.1		
	6.0	55	88	1202	72.12	3.04	82	10.4	55	10.2	41	10.1	33	10.0	27	10.0	23	10.0	20	9.9	16	9.9	14	9.9	14	9.9	14	9.9	14	9.9		
	marce consigliate						2.2	2.2	2.2	2.2	3.1	3.1	1.2	2.1	2.1	2.1	2.1	2.1	2.1	2.1	2.1	2.1	2.1	2.1	2.1	2.1	2.1	2.1	2.1	2.1		
30	3.0	46	74	974	58.44	2.47	79	6.3	53	6.1	40	6.0	32	5.9	26	5.9	23	5.9	20	5.8	16	5.8	13	5.8	13	5.8	13	5.8	13	5.8		
	4.0	50	80	1.127	67.62	2.72	85	8.0	56	7.8	42	7.7	34	7.6	28	7.6	24	7.6	21	7.5	17	7.5	14	7.5	14	7.5	14	7.5	14	7.5		
	4.5	52	83	1.195	71.70	2.85	86	8.8	57	8.6	43	8.5	34	8.4	29	8.4	25	8.4	22	8.3	17	8.3	14	8.3	14	8.3	14	8.3	14	8.3		
	5.0	54	86	1.260	75.60	2.97	88	9.6	58	9.4	44	9.3	35	9.2	29	9.2	25	9.2	22	9.1	18	9.1	15	9.1	15	9.1	15	9.1	15	9.1		
	5.5	55	88	1.320	79.20	3.04	90	10.4	60	10.2	45	10.1	36	10.0	30	10.0	26	10.0	23	9.9	18	9.9	15	9.9	15	9.9	15	9.9	15	9.9		
	marce consigliate						3.2	2.2	2.2	2.2	3.1	3.1	1.2	2.1	2.1	2.1	2.1	2.1	2.1	2.1	2.1	2.1	2.1	2.1	2.1	2.1	2.1	2.1	2.1	2.1		

This data given is as an indication only. It is calculated on the basis of mathematical formulas and average working conditions of machines. We decline any responsibilities connected with the use of this information. Updated on 12/2004.

- 100mm (OD) Hose X 300m Long



